

Figure 10

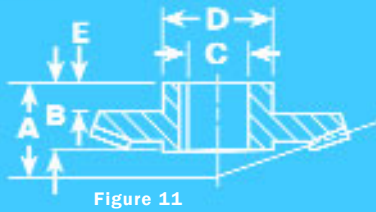


Figure 11

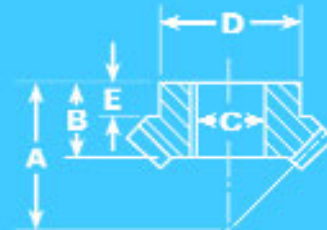


Figure 12

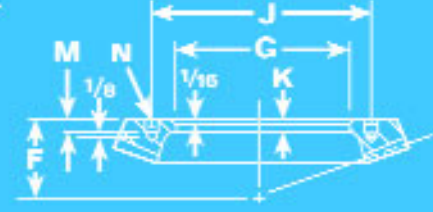


Figure 13

Part No.	10P45L15	10P15R45	8P45L15	8P15R45	7P45L15	7P15R45	6P45L15	6P15R45	55P48L16	55P16R48	5P48L16	5P16R48	45P51L17	45P17R51	4P54L18	4P18R54	338P54L18	338P18R54	
Figure	10	11	10	11	10	13	10	13	10	13	10	13	10	13	10	13	12	13	
Gear																			
Outside Dia.	4.492		5.627		6.438		7.514		8.725		9.625		11.364		13.523		16.015		
Pitch Dia.	4.500		5.625		6.429		7.500		8.727		9.600		11.333		13.500		16.000		
Pinion																			
Outside Dia.	1.716		2.138		2.462		2.882		3.283		3.611		4.304		5.021		5.964		
Pitch Dia.	1.500		1.875		2.143		2.500		2.909		3.200		3.778		4.500		5.333		
Combination	15	45	15	45	15	45	15	45	16	48	16	48	17	51	18	54	18	54	
Diametral Pitch	10		8		7		6		5½		5		4½		4		3¾		
Face Width	1¼		1¾		1		1½		1¼		1½		1¾		2		2½		
A Mount Dist.	2¾	1⅝	2⅝	2	3½		3⅝		4⅞		5⅞		5⅝		7⅞		8⅝		
B Bore Length	¾	1⅝	⅞	1¾	1¼		1¾		1¾		1⅝		1⅞		2⅞		2⅝		
C Bore Dia. <small>+0.005 -0.000</small>	⅝	1¼	¾	1⅝	1⅝		1¾		1⅝		1⅞		1⅞		1⅝		2¾		
D Hub Dia.	1¼	2⅞	1½	2¾	1⅞		2⅞		2½		2⅞		3⅞		3½		3½		
E Hub Length	⅞	7⅞	⅞	⅝	¾		⅞		⅞		¾		⅞		⅞		¼		
F Mount Dist.						1¾		1⅝		2⅞		2⅝		2⅞		3⅞		3¾	
G Bore Dia. <small>+0.001 -0.000</small>						3¾		4½		5¼		5¾		7		8½		10¾	
J Bolt Circle						4⅞		5⅞		6⅞		7⅞		8⅞		10		12	
K Web Thick.						½		½		½		½		½		½		¾	
M Thread Length						7⅞		7⅞		½		½		¾		¾		7⅞	
Screw N	Size					5/16-24		5/16-24		3/8-24		3/8-24		1/2-20		1/2-20		1/2-20	
	No. Req'd					6		6		8		8		10		10		12	
Keyway	3/16x1/16	1/4x3/32	3/16x1/16	3/8x1/8	1/4x3/32		1/4x3/32		3/8x1/8		3/8x1/8		3/8x1/8		1/2x3/16		5/8x7/32		
**Max. Bore	*	1⅞	*	1½	*	*	*	*	*	*	*	*	1⅞	*	2¼	*	2¾	10¾	
Wt. each, lbs.	.25	2.50	.50	4.00	.75	3.88	1.00	5.12	1.5	7.5	2.25	9.62	3.50	16.50	5.75	22.50	10	37.5	
Torque (lb. in.)	Gear	1621		2993		4812		7143		10405		14752		23039		35446		67622	
	Pinion	540		998		1604		2381		3468		4917		7680		11815		22541	

Note: All dimensions are in inches.

*Cannot be reworked.

**Keyway Unchanged