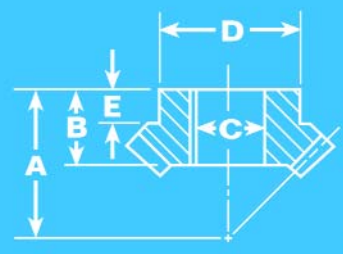
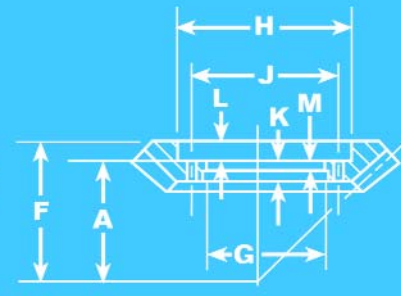
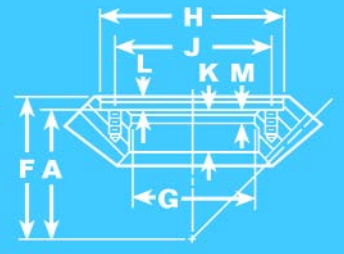

Figure 1

Figure 2

Figure 3

Figure 4

Part No.	18P18L18	18P18R18	12P18L18	12P18R18	10P20L20	10P20R20	8P20L20	8P20R20	7P21L21	7P21R21	6P21L21	6P21R21	6P24L24	6P24R24	5P25L25	5P25R25	45P27L27	45P27R27	4P28L28	4P28R28	4P32L32	4P32R32	35P35L35	35P35R35	3P36L36	3P36R36	257P36L36	257P36R36	225P36L36	225P36R36
Figure	1	1	1	1	1	1	2	2	2	2	2	2	2	2	2	2	2	2	2	2	3	3	3	3	3	3	4	4	4	4
Gear																														
Outside Dia.	1.061	1.571	1.571	1.571	2.086	2.086	2.590	2.590	3.100	3.100	3.665	3.665	4.100	4.100	5.172	5.172	6.201	6.201	7.238	7.238	8.202	8.202	10.262	10.262	12.304	12.304	14.372	14.372	16.430	16.430
Pitch Dia.	1.000	1.500	1.500	1.500	2.000	2.000	2.500	2.500	3.000	3.000	3.500	3.500	4.000	4.000	5.000	5.000	6.000	6.000	7.000	7.000	8.000	8.000	10.000	10.000	12.000	12.000	14.000	14.000	16.000	16.000
Pinion																														
Outside Dia.	1.061	1.571	1.571	1.571	2.086	2.086	2.590	2.590	3.100	3.100	3.665	3.665	4.100	4.100	5.172	5.172	6.201	6.201	7.238	7.238	8.202	8.202	10.262	10.262	12.304	12.304	14.372	14.372	16.430	16.430
Pitch Dia.	1.000	1.500	1.500	1.500	2.000	2.000	2.500	2.500	3.000	3.000	3.500	3.500	4.000	4.000	5.000	5.000	6.000	6.000	7.000	7.000	8.000	8.000	10.000	10.000	12.000	12.000	14.000	14.000	16.000	16.000
Combination	18 18	18 18	18 18	18 18	20 20	20 20	20 20	20 20	21 21	21 21	21 21	21 21	24 24	24 24	25 25	25 25	27 27	27 27	28 28	28 28	32 32	32 32	35 35	35 35	36 36	36 36	36 36	36 36	36 36	36 36
Diametral Pitch	18	12	12	12	10	10	8	8	7	7	6	6	6	6	5	5	4½	4½	4	4	4	4	3½	3½	3	3	2.57	2.57	2.25	2.25
Face Width	3/16	5/16	5/16	5/16	1/2	1/2	9/16	9/16	11/16	11/16	13/16	13/16	1	1	13/16	13/16	15/16	15/16	1½	1½	1½	1½	17/8	17/8	2	2	2¾	2¾	3	3
A Mount Dist.	7/8	15/16	15/16	15/16	15/8	15/8	115/16	115/16	2¼	2¼	29/16	29/16	213/16	213/16	37/16	37/16	41/8	41/8	45/8	45/8	3¾	3¾	411/16	411/16	59/16	59/16	7½	7½	8½	8½
B Bore Length	15/32	11/16	11/16	11/16	7/8	7/8	1	1	1½	1½	1¼	1¼	1¾	1¾	15/8	15/8	17/8	17/8	2	2										
C Bore Dia. ^{+0.005} / _{-0.000}	3/8	5/8	5/8	5/8	3/4	3/4	15/16	15/16	11/16	11/16	13/16	13/16	15/16	15/16	17/16	17/16	111/16	111/16	115/16	115/16										
D Hub Dia.	3/4	1¼	1¼	1¼	1½	1½	17/8	17/8	21/8	21/8	2½	2½	2¾	2¾	3¼	3¼	35/8	35/8	4	4										
E Hub Length	¼	7/16	7/16	7/16	3/8	3/8	7/16	7/16	½	½	9/16	9/16	9/16	9/16	9/16	9/16	¾	¾	11/16	11/16										
F Apex to Back																					43/8	43/8	57/16	57/16	6½	6½	8	8	9¼	9¼
G Bore Dia. ^{+0.001} / _{-0.000}																					3¾	3¾	5	5	6½	6½	87/8	87/8	10½	10½
H C'bore Dia.																					5½	5½	71/8	71/8	85/8	85/8	11¼	11¼	13	13
J Bolt Circle																					45/8	45/8	6	6	7½	7½	10	10	11¾	11¾
K Web Thick.																					5/8	5/8	¾	¾	¾	¾	2	2	21/8	21/8
L C'bore Depth																					5/8	5/8	¾	¾	15/16	15/16	½	½	¾	¾
M Bore Length																					5/16	5/16	5/16	5/16	¾	¾	1	1	½	½
Holes	Size																				13/32	13/32	17/32	17/32	17/32	17/32	1/2-20	1/2-20	1/2-20	1/2-20
	No.																					12	12	12	12	12	12	10	10	12
Keyway	1/8x1/16	3/16x1/16	3/16x1/16	3/16x1/16	3/16x1/16	3/16x1/16	1/4x3/32	1/4x3/32	1/4x3/32	1/4x3/32	1/4x3/32	1/4x3/32	3/8x1/8	3/8x1/8	3/8x1/8	3/8x1/8	3/8x1/8	3/8x1/8	1/2x3/16	1/2x3/16										
**Max. Bore	*	*	*	*	7/8	7/8	13/16	13/16	17/16	17/16	111/16	111/16	17/8	17/8	2½	2½	2¾	2¾	27/8	27/8	*	*	*	*	*	*	*	*	*	*
Wt. per pair, lbs.	.12	.40	.40	.40	.81	.81	1.25	1.25	2.25	2.25	3.75	3.75	5.37	5.37	10.5	10.5	16.5	16.5	24.5	24.5	17.0	17.0	30.0	30.0	46.0	46.0	79.5	79.5	108.0	108.0
Torque (lb. in.)	37	138	138	138	405	405	712	712	1251	1251	1936	1936	2991	2991	5218	5218	7765	7765	11481	11481	14209	14209	24433	24433	38404	38404	69158	69158	95307	95307

Note: All dimensions are in inches.

*Cannot be reworked.

**Keyway Unchanged